

A close-up photograph of a smiling man and woman embracing. The man is on the left, wearing a light blue t-shirt and a brown cardigan. The woman is on the right, wearing a light-colored sweater. They are both smiling broadly, and the background is a bright, warm, out-of-focus light, suggesting an outdoor setting like a beach or park.

gnews

update fragrance  
& cosmetics

january 2024

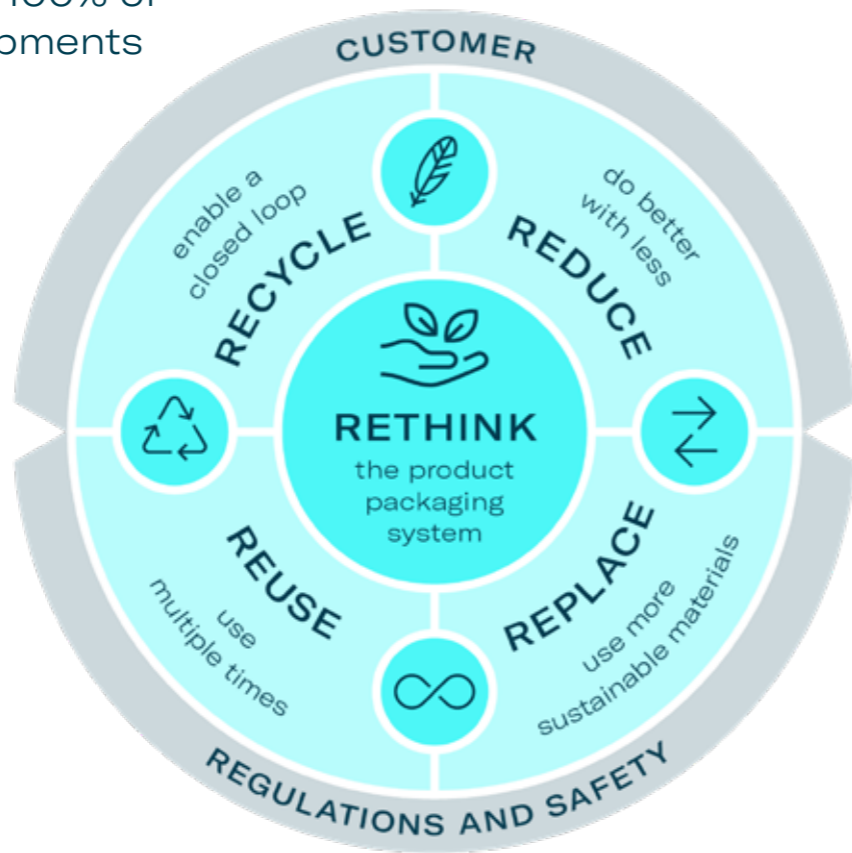
Unveiling the beauty  
of innovative and sustainable  
packaging solutions

gerresheimer  
innovating for a better life

# Embracing sustainability in cosmetic packaging solutions for today's eco-conscious consumers: The Gerresheimer EcoDesign Principles

Today's consumers are actively seeking ways to make a positive impact on our planet and society's challenges. Central to this endeavor is packaging, which plays a pivotal role. Through our EcoDesign strategy, we are dedicated to methodically integrating circular economy principles into our product design, driving us towards a more sustainable future.

**Our target:** We apply our EcoDesign Principles to 100% of our new product developments



Once again, we've achieved EcoVadis Gold status! This rating reaffirms our unwavering dedication to consistently and systematically meeting our sustainability goals.



## REUSE

### Refill Solutions

Say hello to our new refillable cosmetic jar Gx CyClic® in collaboration with our partner Medicos Beauty Group. Crafted with innovation and eco-consciousness in mind, this elegant jar is designed for a more responsible and easy-to-use approach to beauty. Welcome to a world of cosmetic packaging solutions where style meets sustainability in every indulgent application.

Whether it's off-the-shelf options or a customized design, we're your dedicated partner in transforming your requirements into reality.



Gx CyClic® refillable glass jar with Medicos Beauty Re-CLICK insert and closure

## REDUCE

### Lightweight Solutions

Lightweight packaging design is a key step forward on the road to zero emissions.

Our extensive selection includes weight-optimized standard glass and plastic packaging options. Moreover, leveraging advanced simulation technologies and our deep material expertise, we're capable of enhancing the weight of existing packaging designs.

Benefits of lightweight packaging:

- Less virgin material
- Less energy consumption
- Less transport emissions



Gx® Ultralight  
PCR glass jar  
50 ml - 59 g

Gx® Samoa  
PCR glass bottle  
30 ml - 52.5 g

Gx® Vita  
rPET bottle  
300 ml - 23 g



## REPLACE

### Bio-based closures

With the bio-based closure by forewood® and our Gx® Amsterdam glass jar we have created the perfect match for sustainable beauty. The closure is made of 100% plant-based material and gives your brand an unique style with multiple individualisation options.



100% plant-based closure solutions



Mirror ink effect



Metallu spraying

### Sustainable Decoration

We are constantly developing on sustainable refinement options including organic inks and coatings, and embracing more eco-friendly alternatives for embellishments like metallization or hot foil stamping, ensuring both aesthetic appeal and environmental responsibility.



## RECYCLE

### Recycled Materials

Gerresheimer is a pioneer in using post-consumer recycled (PCR) materials in the production of both glass and plastic packaging solutions. While still conveying quality and elegance, recycled materials in cosmetic packaging save natural resources, energy and reduce carbon emissions.

We are offering glass with up to 40% PCR glass content as well as packagings made with up to 100% rPET.



Glass:  
up to 40% PCR



Plastic:  
up to 100% rPET



For more information, contact us and follow us on LinkedIn!